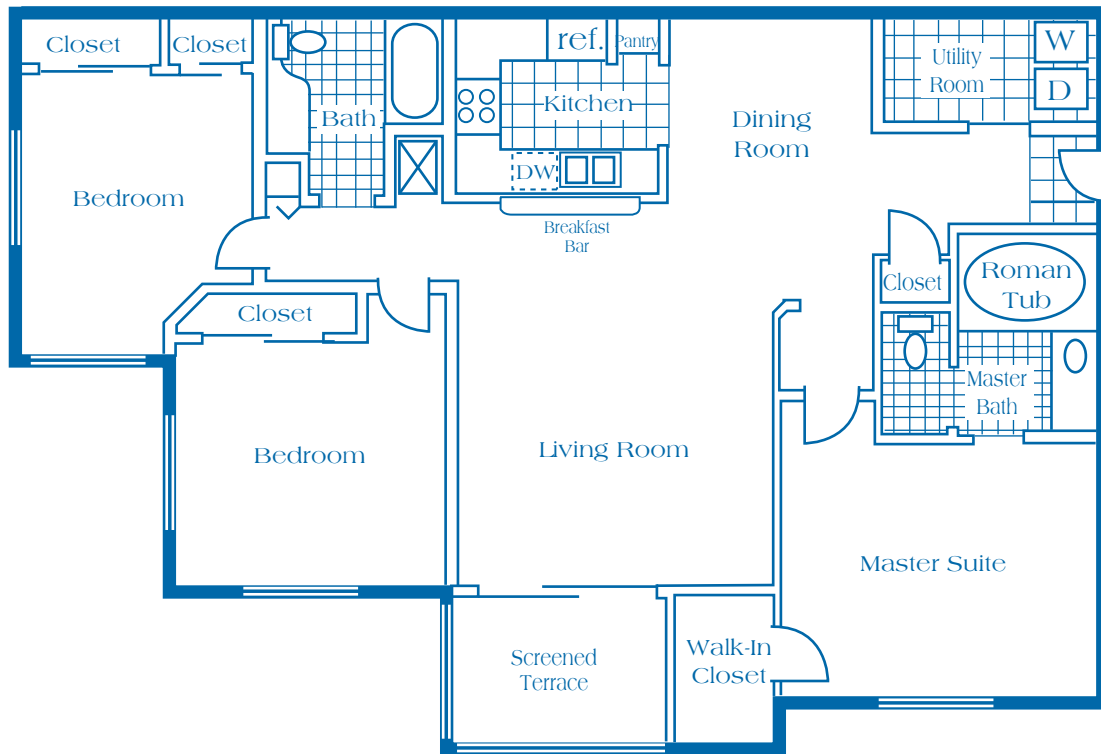


**3 Bedroom 2 Bath**

**1,286 Square Feet**

**Starting at \$1,320**



## INTERIOR FEATURES

- FULLY APPOINTED KITCHEN
- SPACIOUS PANTRY
- DECORATOR CERAMIC TILE FOYER AND KITCHEN AND BATH
- RELAXING OVERSIZED ROMAN TUB
- WALK IN CLOSETS
- LAUNDRY ROOM W/ FULL SIZE WASHER AND DRYER
- SCREENED TERRACE
- OUTSIDE STORAGE IN SELECT PLANS

**MON, WED & FRI: 8AM-6PM**

**TUES & THURS: 8AM-8PM**

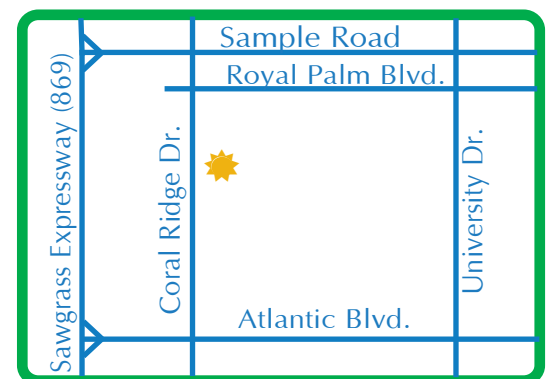
**SAT: 9AM-6PM**

**SUN: 9AM-5PM**

**PRICES SUBJECT TO CHANGE WITHOUT NOTICE**

## RECREATIONAL FEATURES

- 2 TROPICAL POOLS AND SPAS
- 2 NAUTILUS FITNESS CENTERS
- INDOOR RACQUETBALL COURT
- TENNIS COURT
- CAR WASH CENTER
- ADJACENT TO PARK
- KIDDIE RECREATION CENTER



**PLAYERS CLUB**  
**1501 CORAL RIDGE DRIVE**  
**CORAL SPRINGS, FLORIDA 33071**

**PHONE: 954.345.2305**

**FAX: 954.345.6737**

**WWW.PLAYERSCLUBAPTS.COM**